



Leicestershire
Police

Protecting our communities

PCC Candidate's Briefing; Protecting Our Diverse Communities

January 2020

Chief Constable Simon Cole QPM

leics.police.uk

INTEGRATED OFFENDER
MANAGEMENT IOM

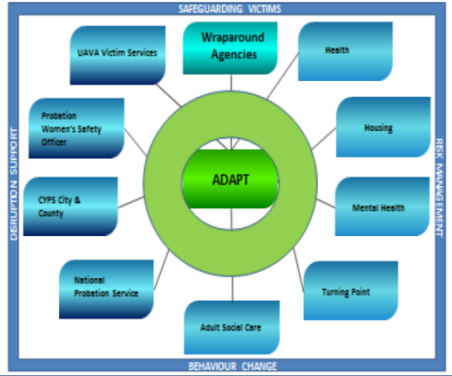


SERIOUS HARM REDUCTION
UNIT SHRU



SEXUAL ASSAULT REFERRAL
CENTRE SARC

Adult Domestic Abuse Perpetrator Team - Reducing Victimisation by supporting perpetrators



MANAGING DA OFFENDERS

SAFEGUARDING
HUB



Do you know what
wellbeing information,
support & initiatives are
available to you?
Find out more



WELCOME...



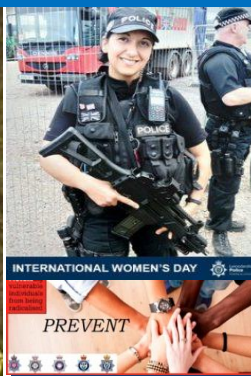
BRAVE HELICOPTER OFFICERS
RECOGNISED



SUPPORTING OUR NETWORKS



DIGITAL HUB



empac

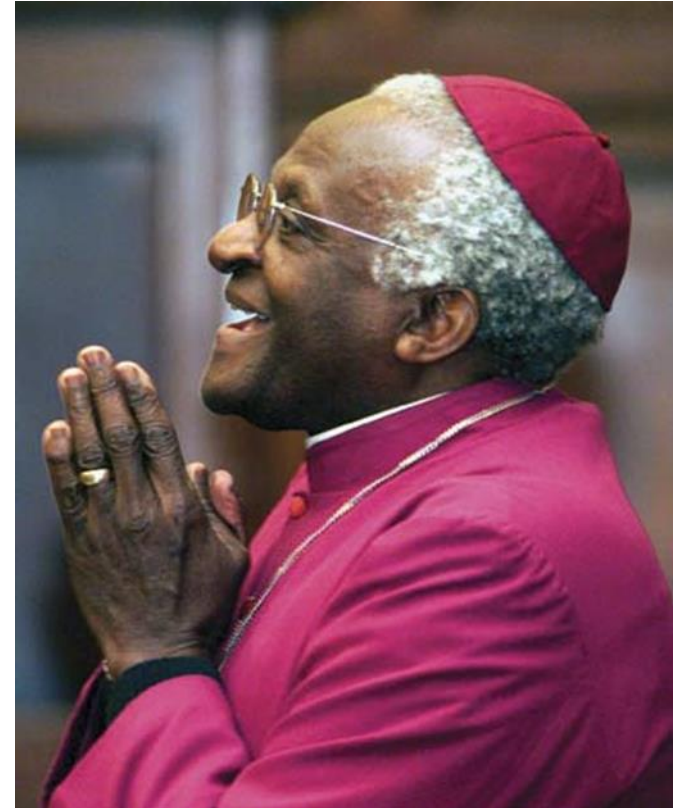


Channel Shift

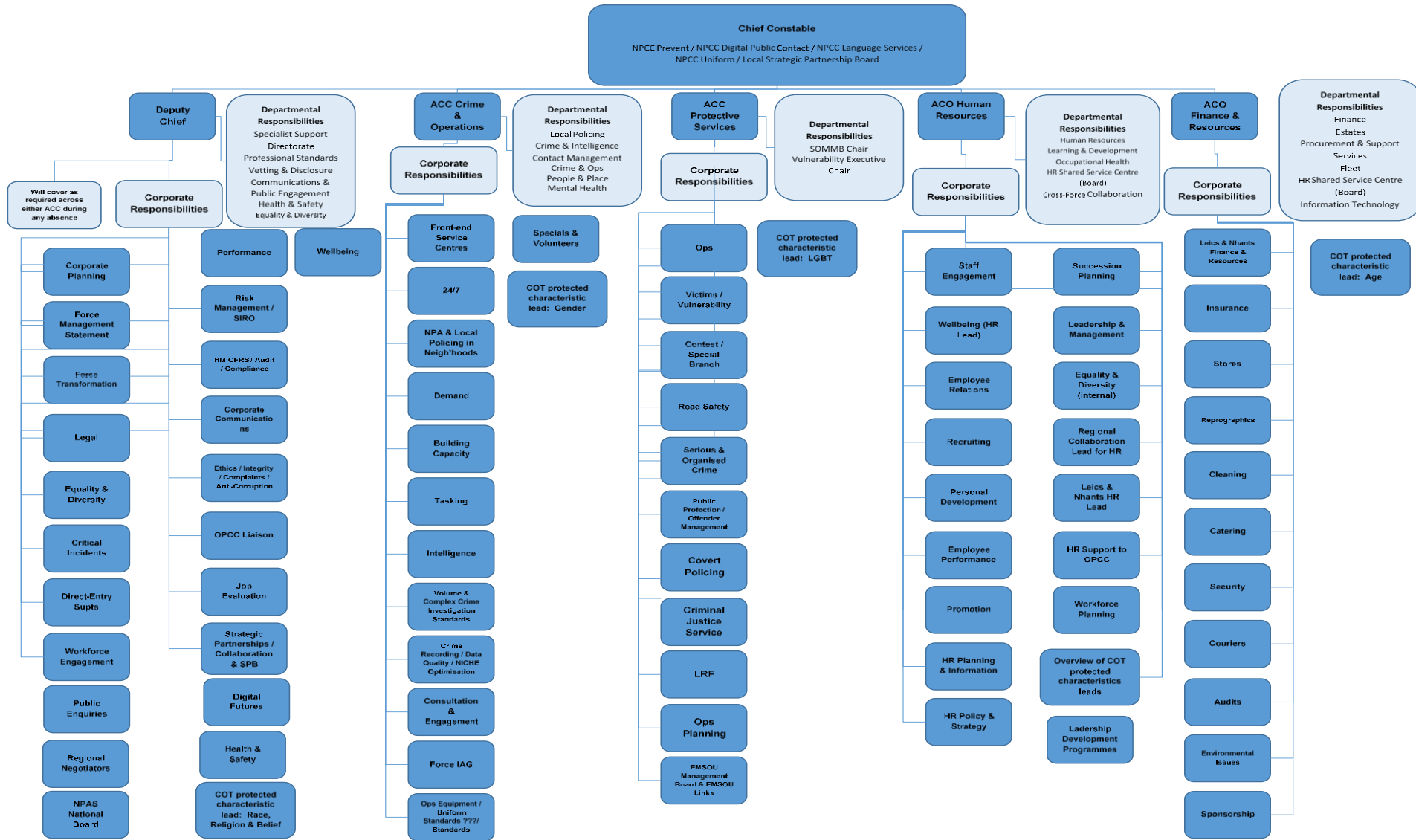
Understanding Our Challenges

*“There comes a point
you have to stop pulling
people out of the river,
get upstream and find
out why they’re falling
in”*

**Archbishop
Desmond Tutu**



Chief Officer Team Portfolios



Strategic Policing Requirements

Chief Constables and PCCs required to plan for national threats:

- Terrorism
- Civil Emergencies
- Organised Crime
- Widespread Public Disorder
- Cyber Attack
- Child Sex Exploitation

Capacity
Contribution
Capability
Consistency
Connectivity



Policing Vision 2025

- *To make communities safer by upholding the law fairly and firmly; preventing crime and antisocial behaviour; keeping the peace; protecting and reassuring communities; investigating crime and bringing offenders to justice.*

- Local policing
- Specialist Capabilities
- Workforce
- Digital Policing
- Governance and accountability



Policing
Vision 2025





Leicestershire
Police

Protecting our communities



**POLICE & CRIME
COMMISSIONER**
for Leicestershire

**Making our diverse
community safer**
Police and Crime Plan 2017-2021



Lord Willy Bach
Police and Crime Commissioner For Leicester, Leicestershire and Rutland

The Police and Crime Plan

VICTIMS

VULNERABILITY

VALUE FOR MONEY

VISIBILITY

VIABLE PARTNERSHIPS

Our Duty

Protecting our communities

We do this by focussing on:

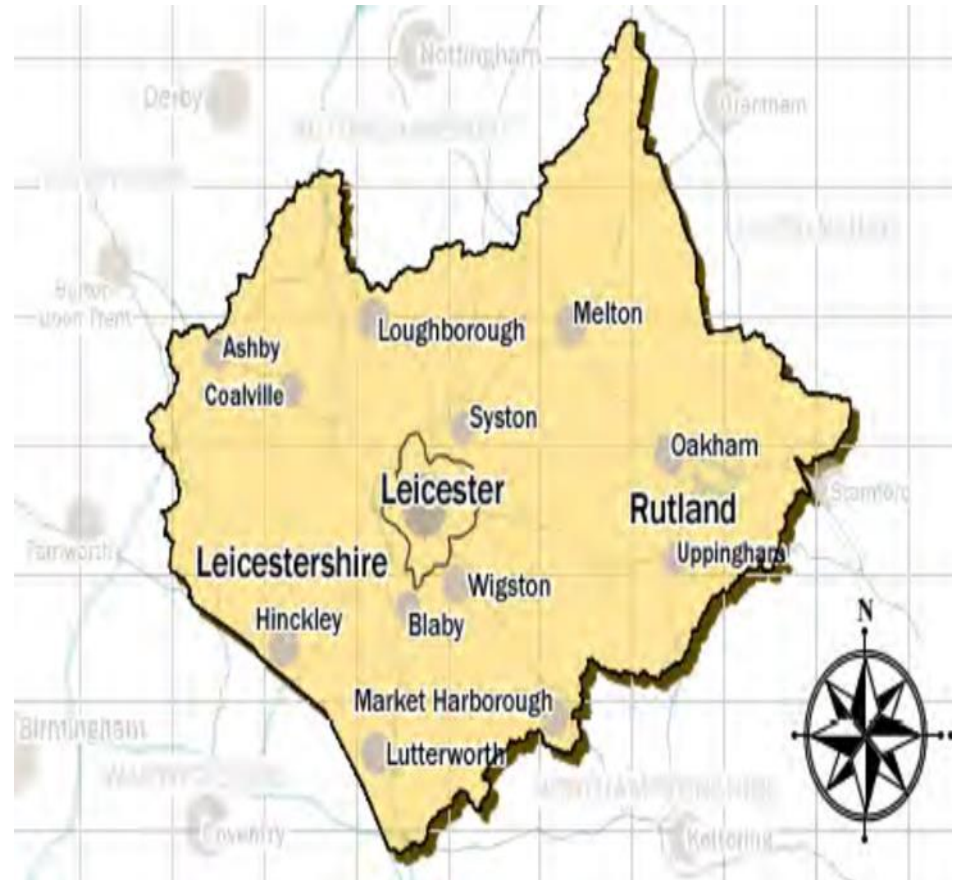
- **Protecting Vulnerable people**
- **Dealing with those who cause most harm**
- **Effectively deploying our people**
- **Working with partners to solve locally identified problems**
- **Trusting our people to use their judgement to make good decisions**
- **Ensuring effective and efficient use of resources**



Leicestershire Police

- 1845 Police Officers
- 184 (FTE) PCSOs
- 1333 (FTE) Police Staff
- 237 Special Constables
- 252 Police Support Volunteers
- 264 Police Cadets

Policing a population of 1.1 million in an area of 2,500 Sq KM



A Typical Day in Leicestershire Police 2019

• Total Crime	259
• Burglary Residential	15
• Robbery	3
• Vehicle Crime	29
• Domestic Incidents & Crime	58 (21,000+ per yr)
• ASB Incidents	36
• Sexual Offences	8
• Arrests	48
• Crimes Detected	34
• Missing Persons	13
• Safeguarding Referrals	75
• Prevent Referrals	0.6
• 999 calls	436
• 101 calls	968
• POLIT – New investigations	1
• Road Traffic Collision Reports	13.5
• 999 calls Last 12 mths	159, 602
• 101 calls Last 12 mths	347, 969



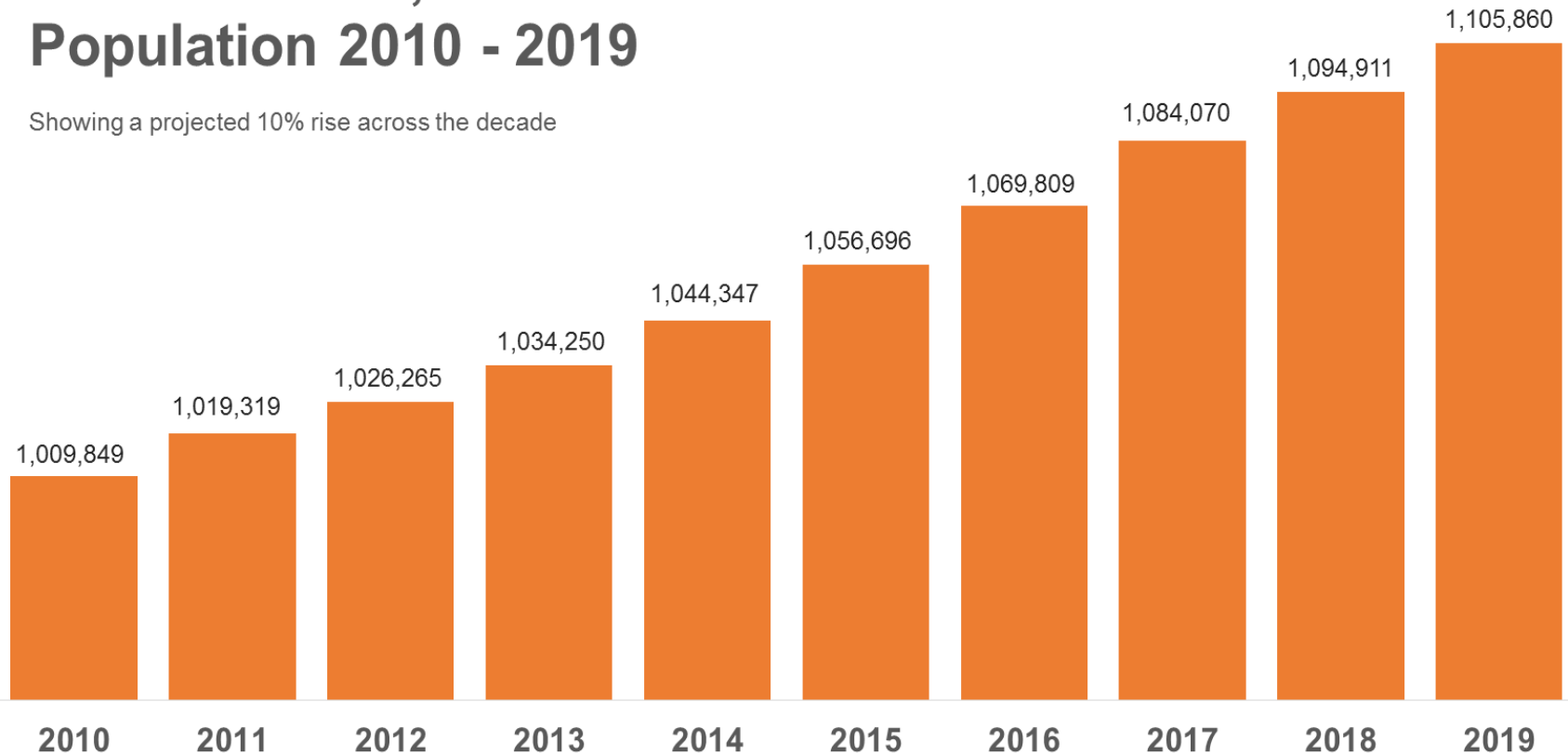
Strategic Challenges



Strategic Challenges: LLR Population Growing

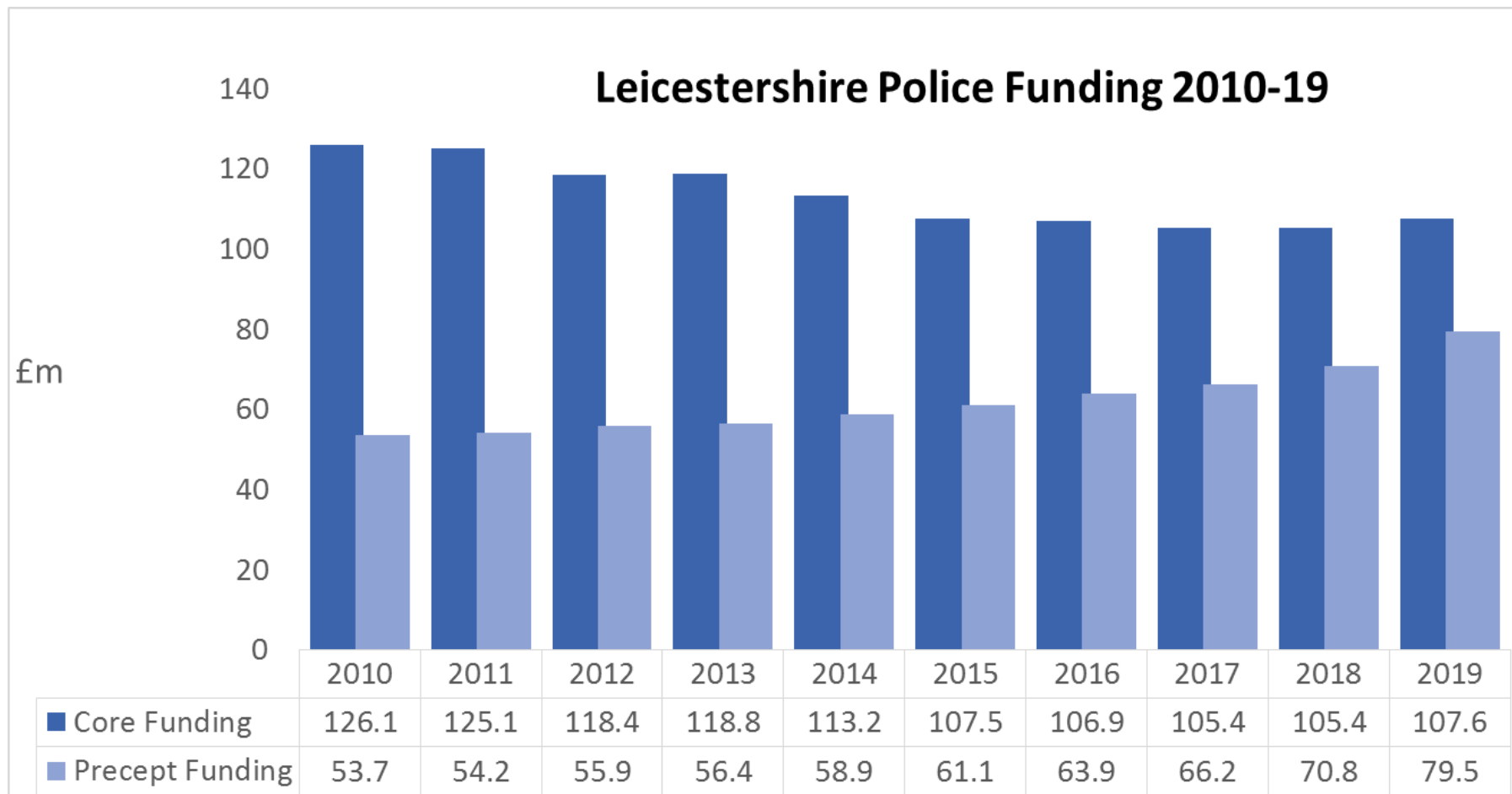
Leicestershire, Leicester and Rutland Population 2010 - 2019

Showing a projected 10% rise across the decade



Strategic Challenges: Budgets

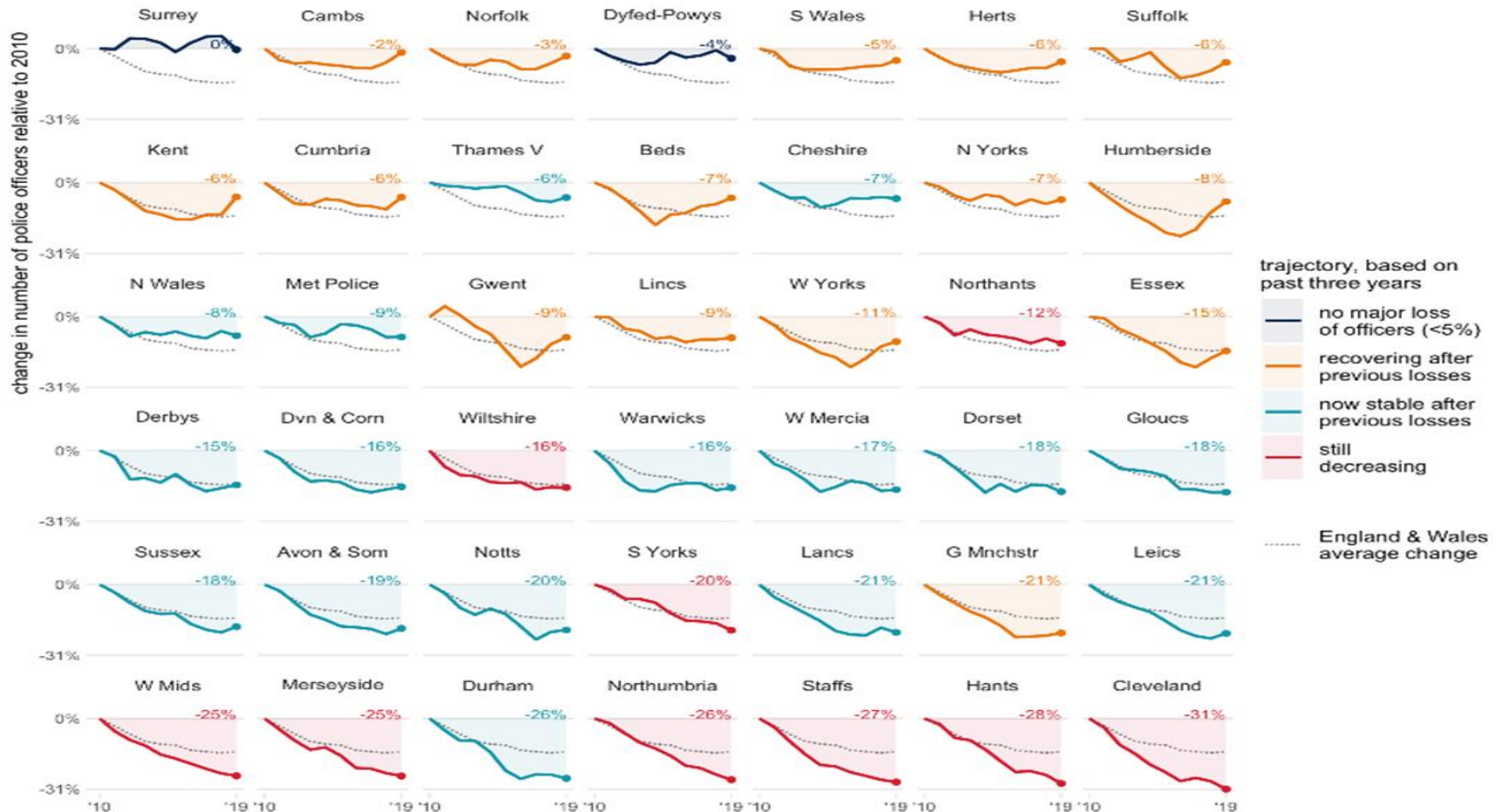
The chart shows that core grant funding has reduced from £126.1m in 2010-11 to £107.6m for 2019-20 a reduction of 15%.



Strategic Challenges: Police Cuts Unequal Impact

Police cuts haven't hit everywhere equally

There are almost 22,000 fewer police officers in England and Wales than in 2010, but numbers haven't dropped equally across police forces. One force (Surrey) has the same number of officers now as 10 years ago, while officer numbers in forces like Humberside are increasing after steep cuts. But in almost half of forces, numbers are still falling despite a decade of often above-average cuts already.



Police Officers Per 100,000 Head of the Population

Leicestershire Ranks 29th with **167** officers

In comparison

The Met - 350

West Mids - 223

Northumbria - 212

Durham - 176

Lincolnshire - 145

Northants - 159

Derbyshire – 168



Nottinghamshire - 168

Kent – 192

Hampshire – 136

Hertfordshire – 170

Sussex – 155

Essex – 168

Bedfordshire - 174

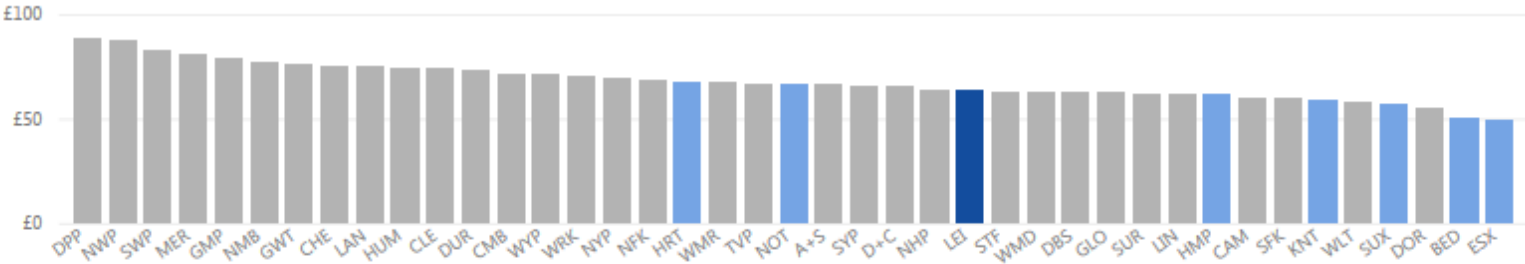
Strategic Challenges: Expenditure vs. Population

HMICFRS Value for Money profile - Old profiles format

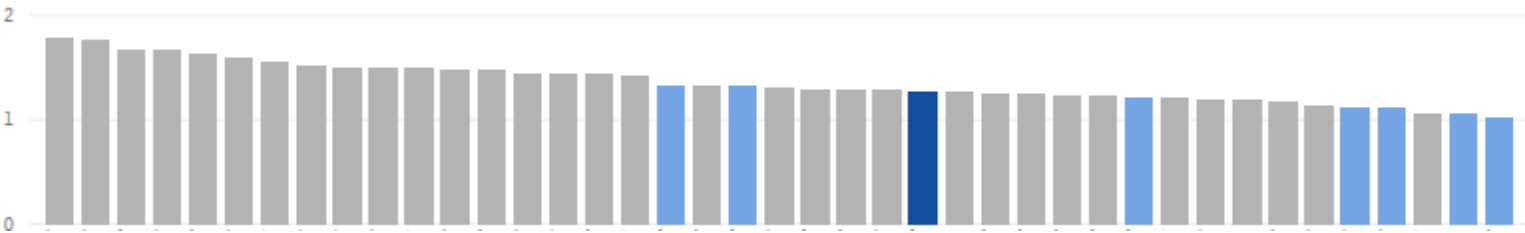
Leicestershire

This page allows you to create tables and charts similar to those in the original profiles. You can also look at data for previous years via the year select

Spending (net revenue expenditure/population)



Staff levels (FTE per 1,000 population)



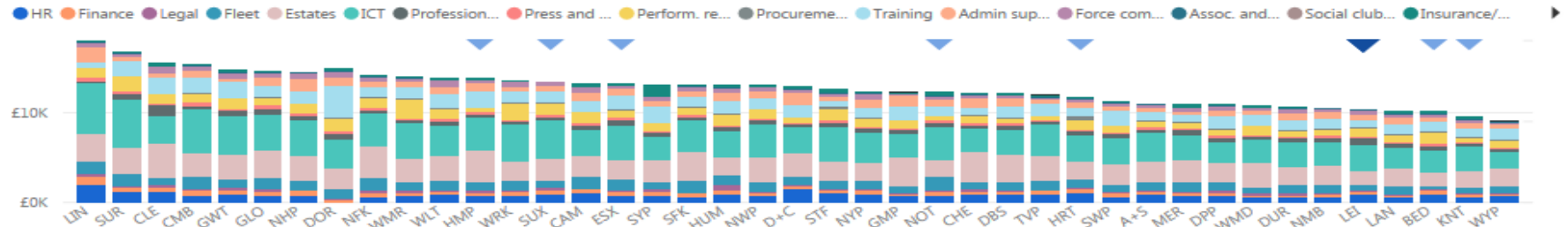
Support Functions Per Total Staff

HMICFRS Value for Money profile - Support functions per total staff

Leicestershire

This page analyses support function costs and staff levels **per total force staff**, rather than population. This analysis may be more meaningful as the costs of function more closely with staff levels than total force population.

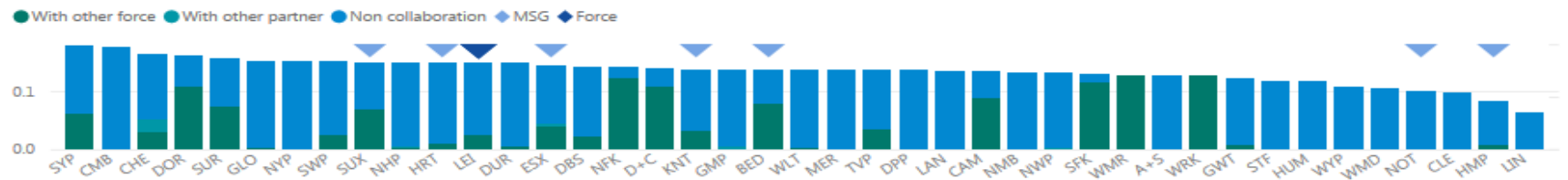
Cost per total force staff



Cost per total force staff by subjective



Staff in selected support function/s per total force staff (by collaboration arrangement)

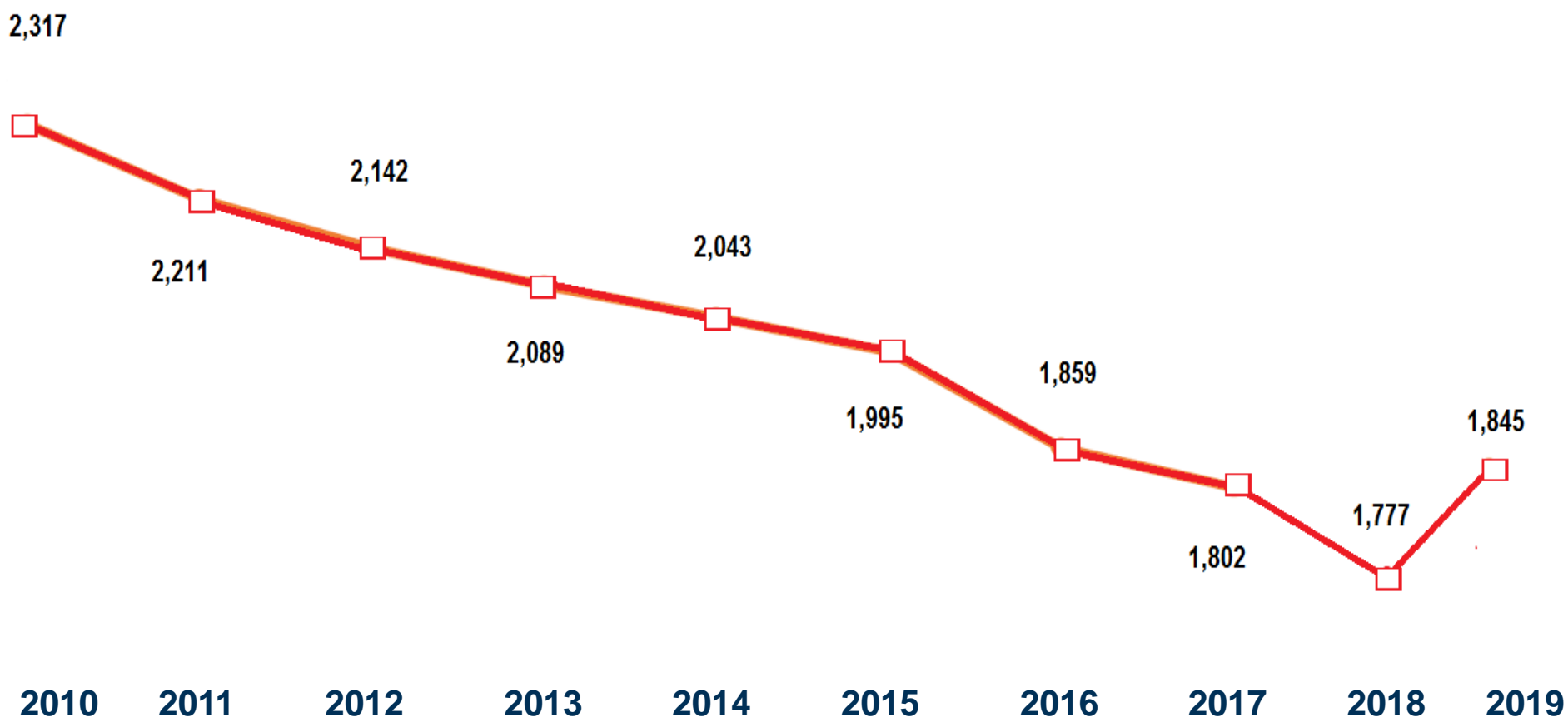


Strategic Challenges: Budget Requirement for 2020/2021

- Budget Requirement 2020/21 £195.4m.
- Estimated Home Office funding £114.6m (flat cash). This excludes any separate 20,000 officer uplift grant.
- Estimated precept funding £77.8m (inc £0.5m collection fund surplus) based on £12 band D increase.
- Budget shortfall of £3.0m to be met from reserves
- Precept increase of £22 required to break even and to negate use of reserves.

Leicestershire Police Officer Numbers Since 2010

Reduction of nearly 500 Police Officers compared to 2010
Reduction of nearly 50 PCSOs compared to the same period



Ratios

2006

1 Police Officer per

430 Residents



2019/20

1 Police Officer per

581 Residents



2018/19

1 Police Officer per

601 Residents



2020/21

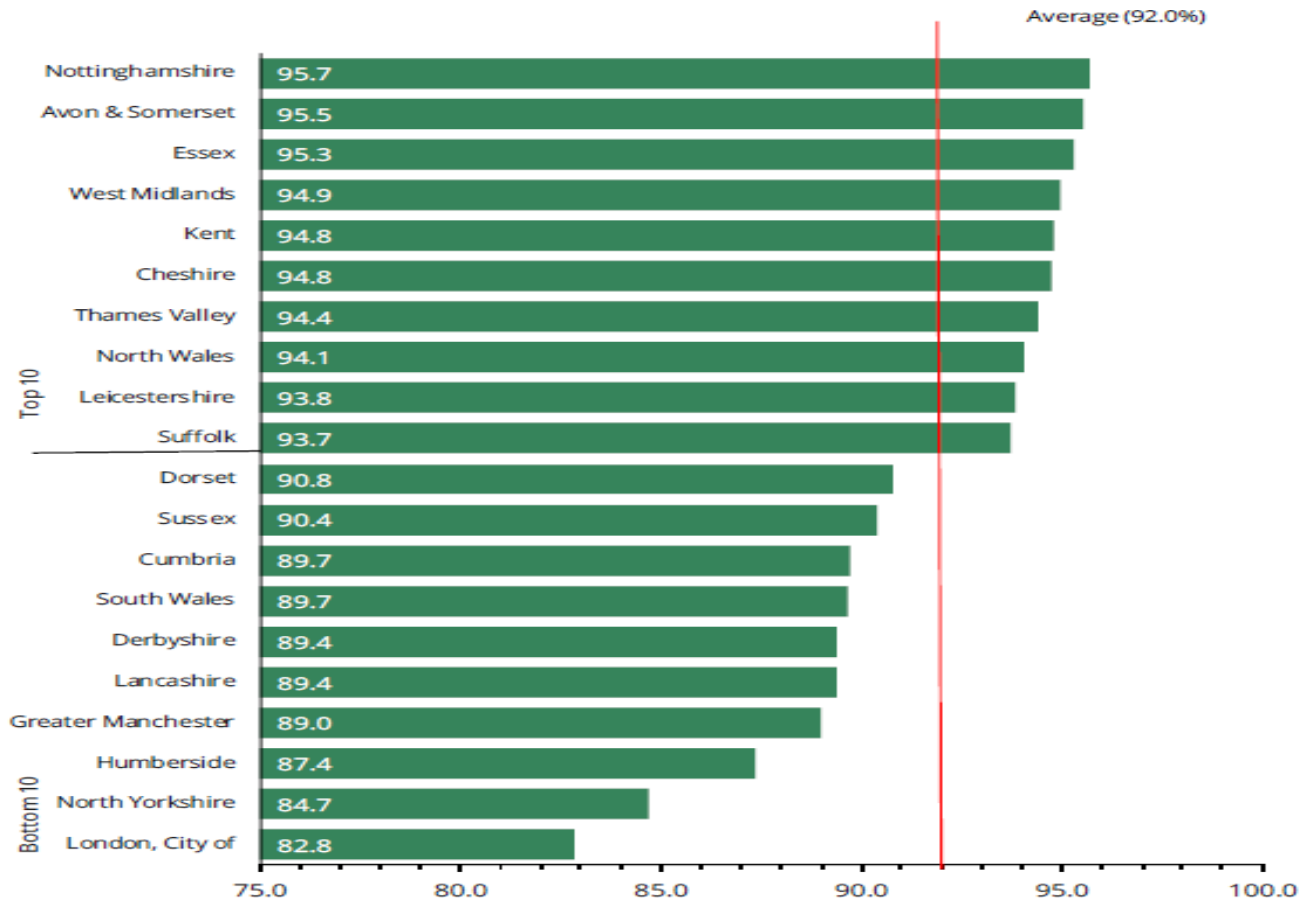
1 Police Officer per

579 Residents

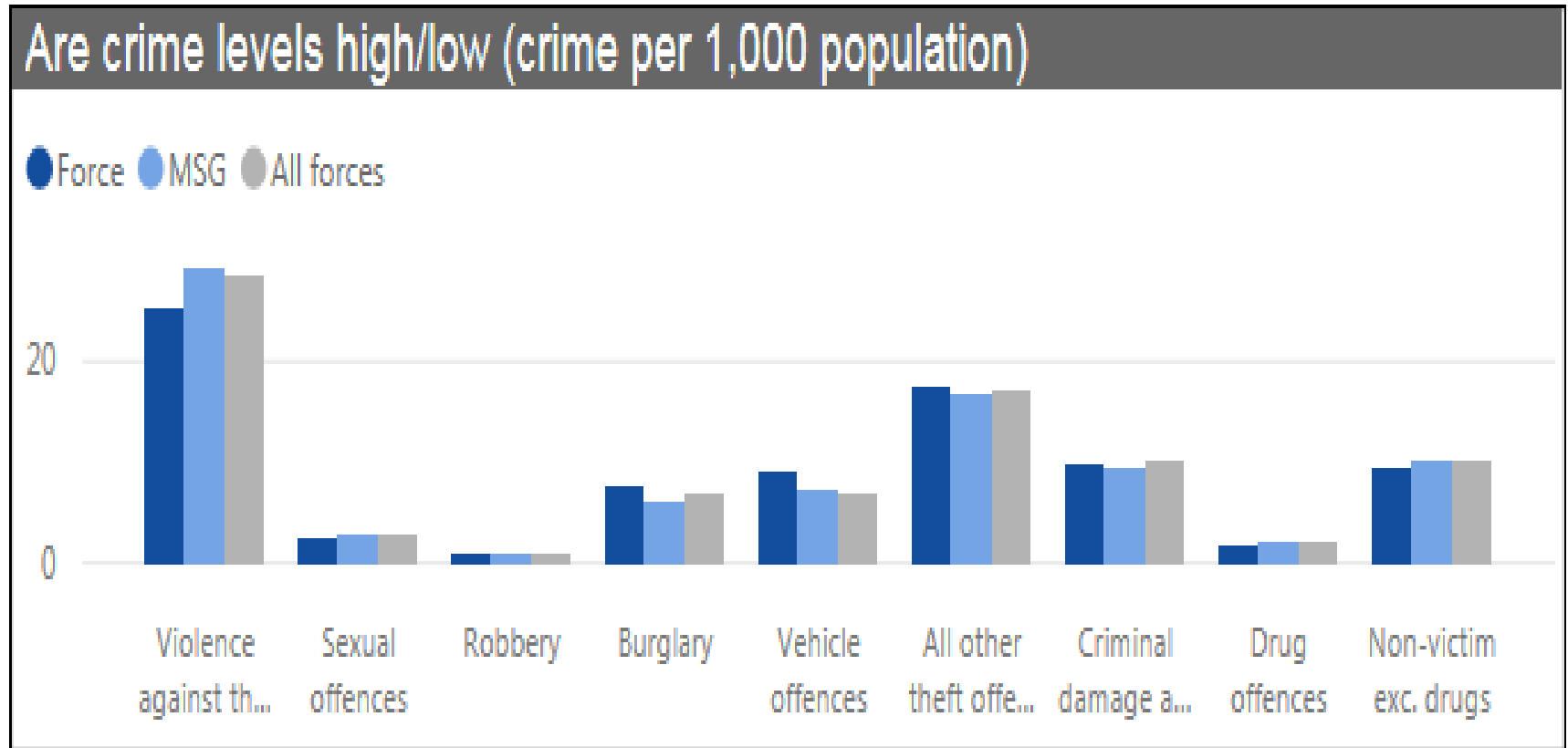
Police Officers in Frontline Roles

Leicestershire are amongst the Top 10 forces

PROPORTION OF POLICE OFFICERS IN FRONTLINE ROLES BY POLICE FORCE
England and Wales, as at 31st March 2019



Strategic Challenges: Crime Levels per 1,000 Population



Changes in Crime Levels per 1,000 Population

HMICFRS Value for Money profile - crime overview (excluding fraud)

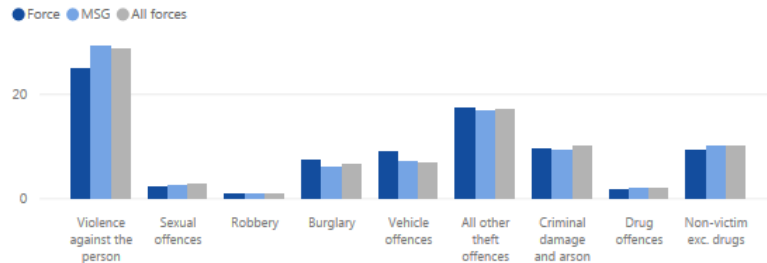
Leicestershire

→ Explore crime type

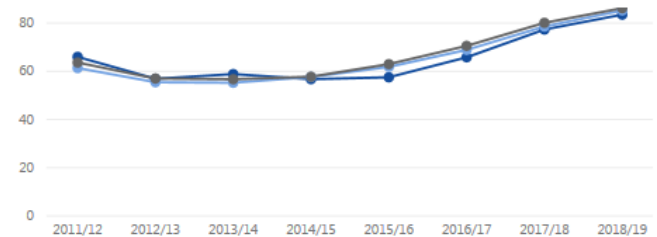
→ Data tables



Are crime levels high/low (crime per 1,000 population)

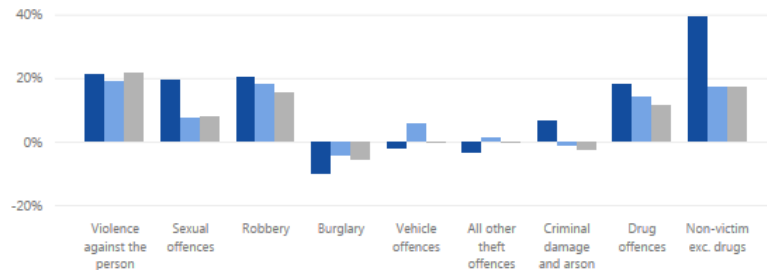


How have crime levels changed, compared to MSG/all (crimes per ...)

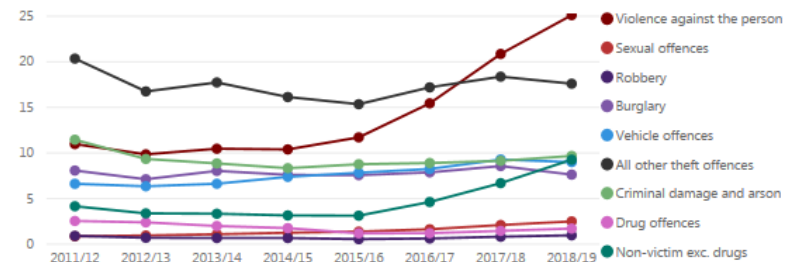


2018/19 Q3 and Q4 crime data for Lancashire Police is currently excluded for administrative reasons.

How are crime levels changing (% change in last year)



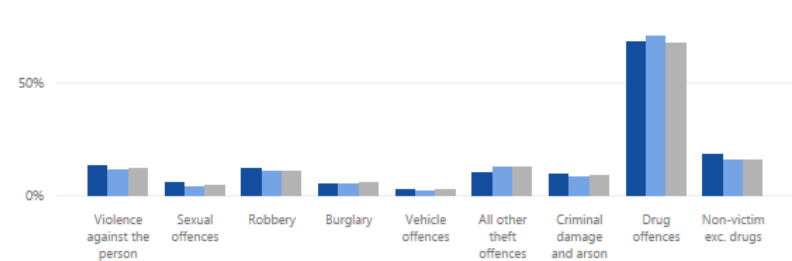
How have crime levels changed, by type (in chosen force, crimes per 1,000 pop)



Are crimes suspects identified (% with suspect identified)

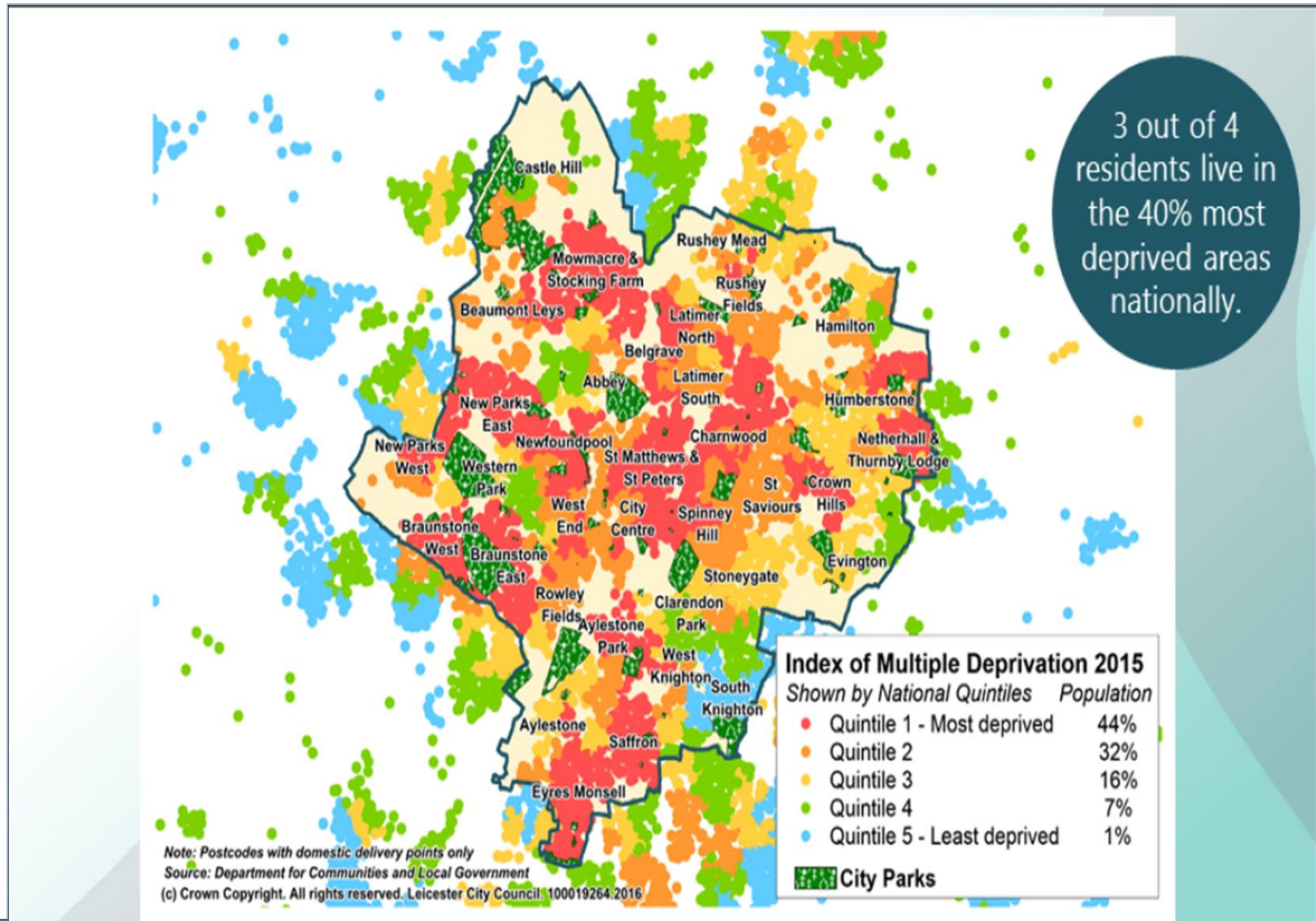


Is action taken against suspects (% with action taken)



Note: Crime outcomes change over time. As investigations progress forces identify suspects and take action. Hence, over time, crimes with the outcome "no outcome yet" will be moved into the other outcome categories.

Strategic Challenges: Crime & Deprivation



Strategic Challenges

The City of Leicester was ranked above the national average for England in the following areas;

- Children in care
- Children in the youth justice system
- Child poverty
- Violent crime hospital admissions
- The index of Multiple deprivation



35% of people are living in 20% of the most deprived areas in England

Leicester is one of the top 10 cities with the lowest weekly workplace earnings

Strategic Challenges: Rural Issues

Rural Crimes – over 8,000 reports between April and November 2019.

Approx. 15% of all recorded crime

Our Response

Op Blackthorn

Rural watch scheme

Four 4 x 4 vehicles purchased specifically to patrol rural areas

As a force we have 10 wildlife crime officers

There are 9 heritage watch volunteers

Working with regional wildlife crime groups



Strategic Challenges: Night Time Economy

Night Time Economy - Violent crimes, Assaults, Drunken behaviour

Friday, Saturdays, Bank holidays, Christmas and New Years

Leicester City Centre, Hinckley, Loughborough, Melton, Ashby, Market Harborough,

Our Response

- Op Nightwatch
- Intelligence gathering, supported targeted patrols
- Licensing Team
- Increasing awareness around substance misuse
- Sharing information with partners through Joint Action meetings
- Working with partners agencies (dedicated officer in POLAM, and in CCTV)
- Use of Criminal Behaviour Orders, and Public Space Protection Orders
- Identification of 6 saturation zones across LLR



Strategic Challenges: Student Populations

Students

Almost twice as likely to a victim of a theft from person (ONS 2017)

Three Universities in LLR

- DMU 26,000
- Loughborough 17,500
- Leicester 17,500

Our Response

Dedicated liaison officers

Work with Fresher's / New students

Targeted police operations



Strategic Challenges: Road Fatalities

Road fatalities

In 2018 there were 35. In 2019 there were 40

Our Response

- Safer Roads Team
- Fatal 4
- Drink Drive Campaigns



Strategic Challenges: Fraud, Cyber Crime

Fraud Offences

11,716 reported offences April 2018 to March 2019.

£16.4m victim losses

69% of victims were businesses



Cyber Crime

312 reported Cyber Dependent Crimes. Average loss is £1,072

(Most numerous are Unauthorised Access (38%))

- 1.4% increase in reporting of Cybercrime
- 900,000 I.P addresses identified as being infected with malware
- 84% Individuals, 16% Businesses (still known to be massively underreported)



Our Response

- Prevention/Protection advice delivered to over 200 businesses across Leicestershire, over 3,000 individuals
- Changes made at policy level within local education authorities by EMSOU to identify and refer individuals at risk of committing Cyber Dependent crime offences
- Cybercrime now a Strategic aim/threat for most Community Safety Partnerships

Strategic Challenges: Criminal Justice System

Charging Delays

Over the summer to manage the workload of CPSD arrangements were put in place where only high risk in custody jobs needing immediate charging decisions were allowed to go to CPSD. These are still in place. This has led to back logs and delays within CPS. This may elongate the times into court as CPS are taking even more time to get decisions to us.



Cuts to Court Sittings – 2020

We have been told that Magistrates Court sittings are likely to be cut in 2020. The cut is likely to be in trial courts rather than first sitting. This could lead to delayed justice.

East Midlands Criminal Justice Service
Custody Procedure

Delays in Police Led Prosecution

Linked to the above point are mounting delays in PLP sessions. There is risks around this e.g defendants who should be disqualified are driving awaiting the disqualification hearing.

Strategic Challenges: Impact of Austerity on Partners

The 1998 Crime and Disorder Act s.17 gave local authorities a key role in crime prevention ...

“Without prejudice to any other obligation imposed on it, it shall be the duty of each authority to which this section applies to exercise its various functions with due regard to the likely effect of the exercise of these functions on, and the need to do all that it reasonably can to prevent crime and disorder in its area”



Strategic Challenges: Suicides, Concern for Safety

Concern for Safety

Between 1st January and 1st December 2019 our control room received 17,826 calls relating to 'Concern for Safety'

Are we the MOST APPROPRIATE AGENCY?

Suicides and Self Harm

2017 - 60

2018 - 67

2019 - 66



Our Response

- A new Suicide Prevention Strategy is being developed for 2020-2023.
- Real Time Data expected to be developed into Niche during 2020.
- National funding available to areas that have Real Time Data, Leicestershire one of the first areas to receive funding which has paid for additional services being provided by Bereavement Service (The Tomorrow Project).

Protecting the Vulnerable



Between January 2019 and 30th November 2019;

- Adult and child safeguarding referrals 22,055
- 2599 Sexual offences (inc rapes)
- Rapes - 931
- We dealt with 4536 missing person reports
- Modern slavery and Human Trafficking – July to December 117 reported crimes 183
- Domestic crimes and incidents, 19175
- High Risk Domestic crimes 672
- Sex offenders managed within the community - 1028 (Dec 2019)
- MARAC – In November 2019 there were 50 city cases and 48 county cases discussed

Strategic Challenges: Non - Crime Demand

MH Triage car demand

Between July 2019 and November 2019 the Triage car reviewed 3176 incidents deploying to 214.



MH related Crime

Mental Health flagged crime in Leicestershire 2018/2019 saw a 99% increase from 3,257 crimes the year before to 6,490.

Between January and August 2019 approximately 6.4% of all crimes involved either a MH victim or perpetrator.

PAVE - Pro Active Vulnerability & Engagement Team



Background

- The team is PCC funded and started in October 2016. Its remit is to try and engage those individuals who place a high demand on police resources and have complex needs. The team is multi agency with police, mental health and substance misuse with support from a consultant psychiatrist.

Referrals

- PAVE has received 385 referrals (Oct 2016- 30th Sept 2019)
- PAVE have worked with 213 service users (accounts for 228 referrals), who have now been closed to the service.
- PAVE are currently working with 22 service users (as at 21/10/19).

Impact (July – September 2019)

- Reduced demand by discharged service users - 29%
- Reduced demand by current service users - 81%

Our Strategic Priorities 2019/20



**Drug Supply
& County
Lines**

**Organised
Acquisitive
crime**

Firearms

Knife Crime

**Child Sexual
Exploitation
& Abuse**

**Sexual
Offences**

**Domestic
Abuse**

**Modern
*Slavery &
Human*
Trafficking**

**Cyber Crime
& Fraud**

Vulnerability & Exploitation

Repeat Victims & Offenders

Serious and Organised Crime

Serious and Organised Crime Strategy 2018 Strategic Objectives



- Relentless disruption and targeted action against the highest harm serious and organised criminals and networks
- Building the highest levels of defence and resilience in vulnerable people, communities businesses and systems.
- Stopping the problem at source, identifying and supporting



Serious and Organised
Crime Strategy

November 2018

CS 0718



Leicestershire
Police

Protecting our communities

County Lines

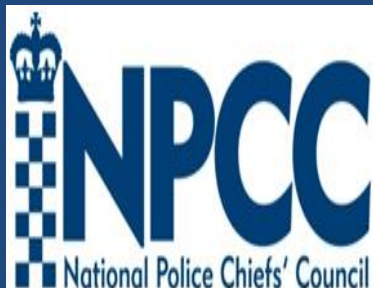


**POLICE & CRIME
COMMISSIONER**
for Leicestershire

Prevention | Partnership | Protection

“County Lines is a term used to describe gangs and organised criminal networks involved in exporting illegal drugs into one or more importing areas (within the UK), using dedicated mobile phone lines or other form of “deal line”. They are likely to exploit children and vulnerable adults to move (and store) the drugs and money and they will often use coercion, intimidation, violence (including sexual violence), and weapons.”

Home Office : 2018



County Lines - The Risks to Young People

Physical injuries,
risk of serious
violence and death

Emotional and
psychological
trauma

Sexual violence

Debt bondage

Poor attendance
and/or attainment
in school

Arrest and
conviction

Operation Lionheart



940 officers and staff working around the clock throughout the operation



92 people arrested



Cracking down on the sale and distribution of drugs

132 warrants executed



From 8 towns and cities across the country



Items recovered include:

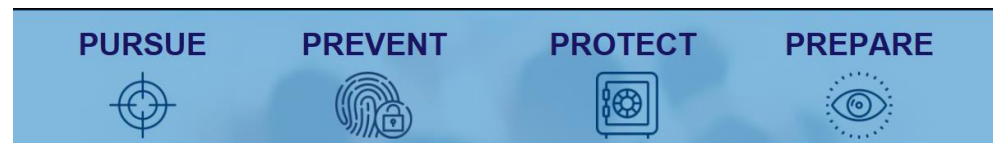
- ✓ 13 weapons
- ✓ 90 mobile phones
- ✓ Drugs
- ✓ Thousands of pounds in cash



79 people charged

Cross Force Collaboration

- Major Crime
- Serious Organised Crime
- Technical Surveillance
- Special Branch
- Learning and Development
- Shared HR Services
- Specialist Operations
- Criminal Justice



National Crime Agency

National Strategic Assessment 2019

Exploitation of the Vulnerable

- Child Sexual Abuse and Exploitation
- Modern Slavery and Human Trafficking
- Organised Immigration Crime



Impact

- 2.88m accounts exist globally on the most harmful CSAE dark web sites
- 36% increase in referrals of potential victims of MSHT in 2018 vs. 2017
- £400 - £13,000 - range of amounts paid by migrants to travel from France to the UK (as recorded in December 2018)

Impact of SOC on Communities

- Firearms
- Drugs
- Organised Acquisitive Crime



National Crime Agency

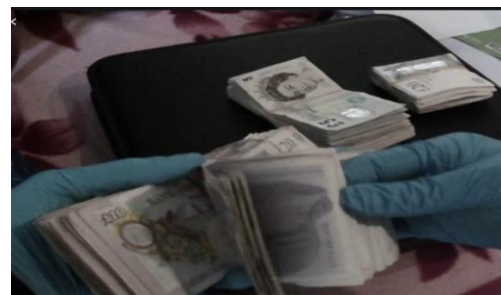
National Strategic Assessment 2019

Impact

- £37 Billion – Estimated annual cost to the UK economy from SOC
- 4,542 organised crime groups mapped in the UK (to June 2018)
- 29 homicide victims killed by firearms in the UK (year ending March 2018)
- 4,826 UK drug deaths in 2017

Harm to the UKs Economy and Institutions

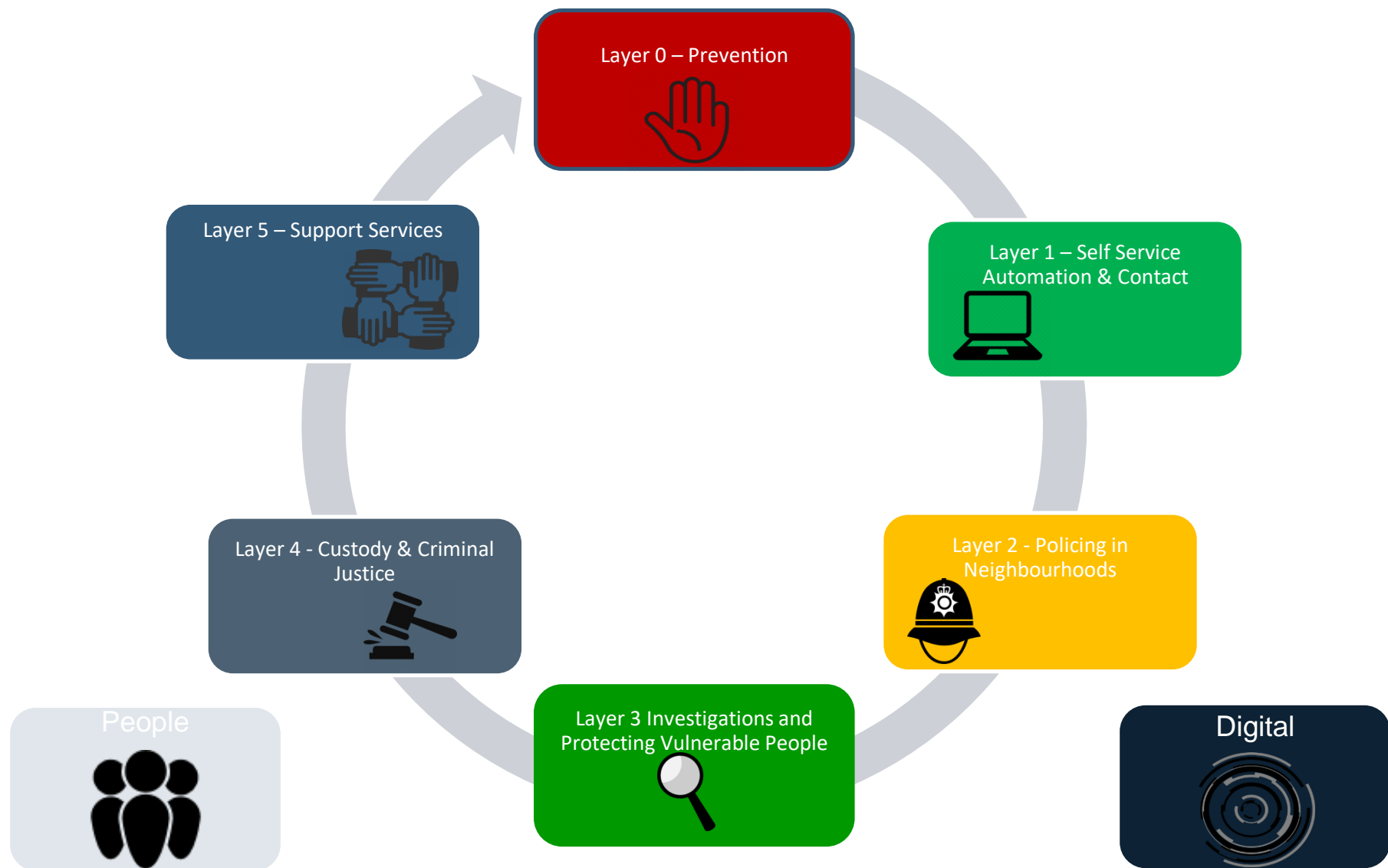
- Money Laundering
- Fraud and Other Economic Crime
- International bribery, corruption, sanctions contravention
- Cyber Crime



Impact

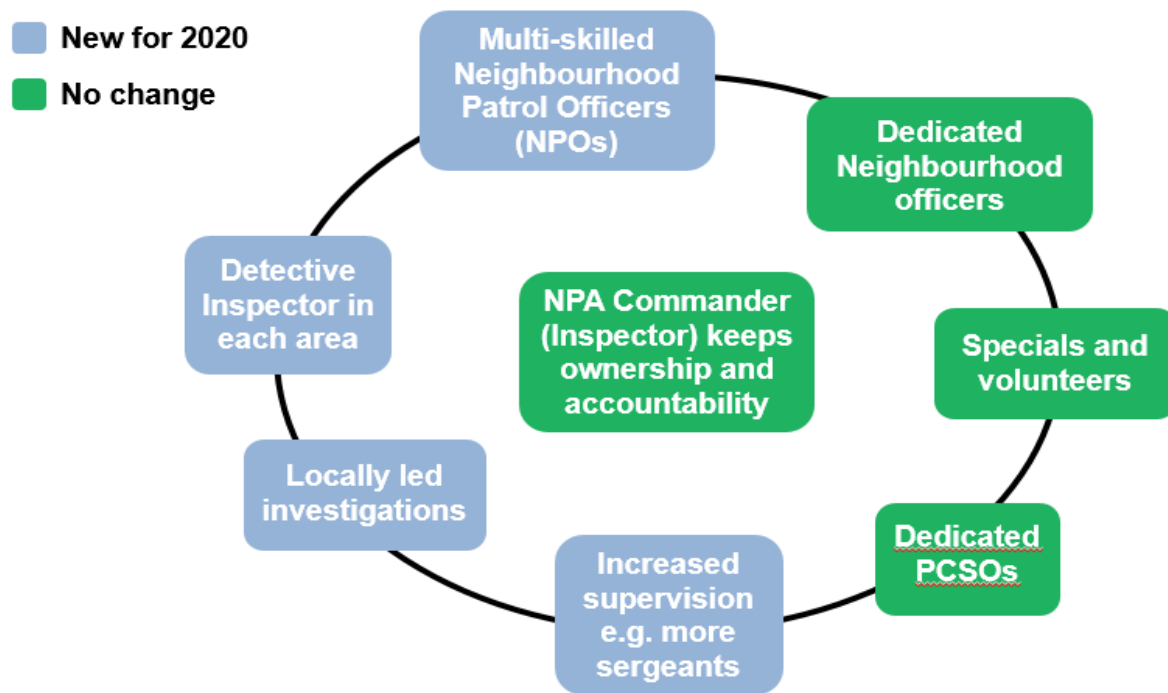
- 84% of fraud reported April – Sept. 2018 was estimated to be cyber enabled
- £100 Billion - the potential scale of money laundering impacting the UK annually
- 22% of reports to Action Fraud in 2018 related to viruses, malware or spyware
- From April 2017 – March 2018 there were 122 reports of suspected breaches of financial sanctions to the value of £1.35 Billion

Target Operating Model, breakdown into layers/areas of 'business'



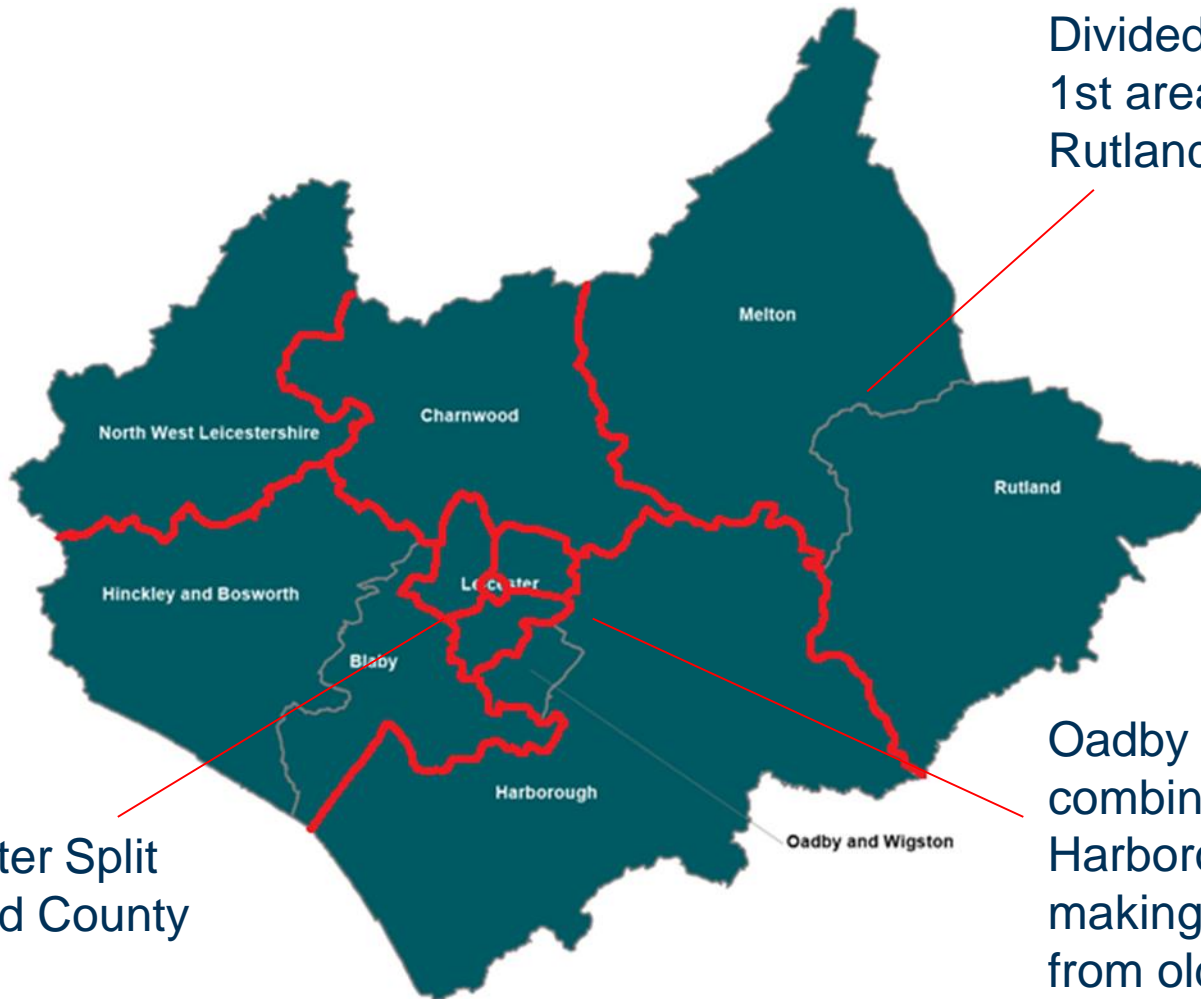
Policing in Neighbourhoods

Overview- policing in neighbourhoods



Additional Neighbourhood Policing Area (NPA) (8 to 9)

Eastern Counties
Divided into 2 areas.
1st area Melton and
Rutland



South Leicester Split
along City and County
border

Oadby and Wigston
combine with
Harborough district
making second area
from old Eastern
Counties

Policing in Neighbourhoods

Phase 1: Policing in Neighbourhoods - go live 11 March 2020

Summary of changes

- Increased Neighbourhood Policing Areas from 8 to 9
- Boundary changes
- Talk Group realignment
- Naming conventions
- Neighbourhood Patrol Officer (NPO) capability
- Locally based CID
- Increased locally based Sergeants
- LPD Management Structure
- CID Management Structure
- NPA Command Structure & responsibilities
- Overall Structure & 'go-live' establishment of 1915 increasing to 1939 by end April 2020

Policing in Neighbourhoods

- **Benefits**

- Better service for the people of Leicester, Leicestershire and Rutland
- More resilience and capability in local areas
- Stronger local knowledge and intelligence
- Shorter travel times = quicker responses
- More multi-skilled, local officers who investigate, make arrests and prepare cases
- Solid platform for recruitment

- **Challenges we are addressing**

- Period of adjustment from “go live” in March 2020
- Recruitment is good but takes time
- Training and equipping the frontline
- Aligning new model with support functions



TARGET OPERATING MODEL

*Changes with effect from
11 March 2020*

OVERALL PRINCIPLES

- Working together as one team
- Based geographically
- Getting it right first time

New NPO & Local CID roles

- NPA Commander & DI
- Shared responsibility for NPA
 - DI responsible for all crime
 - NPA commander is the strategic lead for the NPA

- NPO – Neighbourhood Patrol Officer
- Incident response
 - Volume crime investigation
 - Pro active patrol

- NPO Sgt – Neighbourhood Patrol Sgt
- Line manages NPOs
 - Incident and investigation oversight
 - Demand management

- CID DS - Criminal Investigation Dept Detective Sergeant
- Line management for DCs
 - Oversight and support for investigations carried out by DCs and NPOs

- CID DC – Criminal Investigation Dept Detective Constable
- Investigation of serious offences

- DNO – Dedicated Neighbourhood Officer & PCSO's
- Problem solving
 - Visibility in local community
- ISAs – Investigative Support Assistant
- Support and progress investigations on behalf of NPOs and DCs

Who's at each NPA?

NORTH WEST LEICESTERSHIRE
Coalville

NN

CHARNWOOD
Loughborough

NL

MELTON & RUTLAND
Melton
Oakham

NR

HINCKLEY & BLABY
Hinckley
Braunstone
Bosworth

NH

WIGSTON & HARBOROUGH
Mkt Harborough
Wigston

NA

WEST LEICESTER
Beaumont Leys

NW

SOUTH LEICESTER
Euston
Street

NS

EAST LEICESTER
Keyham Lane
Spinney Hill
St Matthews
Belgrave

NE

CENTRAL LEICESTER
Mansfield House
Hinckley Road

NORTHERN COUNTY
PRT2 TG13

EAST CITY
PRT4 TG46

WEST CITY
PRT3 TG85

SOUTHERN COUNTY
PRT1 TG33

4 Talk Groups

9 NPAs, instead of 8

COUNTY

CITY

Policing in Neighbourhoods

In Summary

- Better service for the people of Leicester, Leicestershire and Rutland
- Strengthening of neighbourhood policing approach
- More resilience and capability in local areas e.g. investigations
- Nine areas with own local commander
- New multi-skilled Neighbourhood Patrol Officers
- A solid platform for recruitment

HMICFRS PEEL Inspections 2019



Efficiency

Effectiveness

Legitimacy



GOOD

Areas highlighted included;

- Work to map force demand
- Understanding and identifying vulnerability
- The work of the Crime Bureau
- Serious Harm Reduction Unit

National Awards and Recognition

Kayleigh's Love Story



Seen an estimated 36 million times
Placed in the national film archives
Royal Television Society Midlands
Gold Award – Best promotional programme

Sexual Assault Referral Centre (SARC)

Manager Millie Gant – Highly Commended at the
International Association of Women Police
Recognition Programme



Rape campaign film wins Royal Television Society award

The film part of the All is Not Lost campaign received the Gold Award in the Best Production Craft category in the annual Royal Television Society (Midlands) awards.

British Association of Women in Policing

Police Officer of the Year –
Evie Wilcox

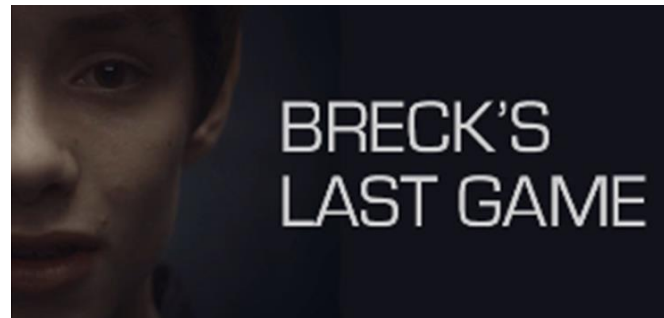


There was also an award for **Volunteer of the Year**
Police Cadet
Grace Burton

Hinckley Road Murders Judge Commends Officers and Staff



Awards in Innovation in Digital Investigation & Intelligence



Silver Award Winner
Cannes Corporate Media and TV Awards

Our Commitments to ALL Candidates

We will be even handed with all candidates

We welcome dialogue with potential candidates

We look forward to working with you to do what is best for local people

